

Be on the cutting edge with America's most progressive rural hospital!

- Pioneered award winning **LEVEL ONE CARDIAC PARTNERSHIP** with Sacred Heart Medical Center & Northwest MedStar. Set national best practices.
- Pioneered **FAST STROKE PROTOCOL** for State of Washington. Partners with Sacred Heart & MedStar.
- Surgical program rated in top 10 of the nation in Hospital Compare.
- Long Term Care program certified Eden Alternative facility.
- Implementing national standards and patient registry for rural diabetes program and cardiovascular disease.
- Pioneered cutting edge Peer Review program for physicians at rural hospitals. Program is now state-wide.
- Founder of Rural Health Quality Network — 37 hospitals state-wide.
- Founder of Critical Access Hospital Network — 6 rural facilities in Eastern Washington.
- Our infection rate is one of the lowest in Washington State!



Live the Sweet Life!

- Rural community just 40 minutes from Spokane.
- Family friendly — great place to raise kids!
- Small, caring schools with great athletic & extra-curricular programs. Build a solid, well-rounded college resume!
- Lower taxes than the city.
- Affordable housing & real estate.
- Low crime rate.
- Hunting & fishing abound!
- Lake Roosevelt recreation & water sports close by.
- Progressive medical community makes this a great place to retire!



*Live in town, the country or buy a place on the lake — it's up to you.
Live the lifestyle you want!*

Lincoln Hospital Dist. 3



**Nurses ROCK
at Lincoln
Hospital!**
(open to find out why...)



509.725.7101

Don't settle for mediocrity — join the Lincoln Hospital team!

Our nurses are nationally recognized for quality care!

About Lincoln Hospital...

- Located in Davenport, WA — 36 miles west of Spokane
- Board Certified Medical staff includes 3 MD's, 3 DO's, 3 ARNP's and 2 PA-C's
- 25-bed Acute and Swing Bed
- 24-hour ER
- Critical Access Hospital designation
- Progressive Surgical Program
- In-house Lab, Radiology, Physical & Occupational Therapy
- Long Term Care, Assisted Living & three Medical Clinics
- Progressive Foundation to fund patient comforts & new technology

Compensation & Benny's...

- 3 - 12 hour shifts & every third weekend
- Highly Competitive Salary (JUST ASK!)
- Loan Repayment Program with sign-on contract
- Health, Life & tax free FSA
- Sign-on Bonus
- Relocation Package
- Night/weekend differential
- Did we mention...



LOAN REPAYMENT PROGRAM!

Specialize in VARIETY!

Avoid the rut! Because of our size, our nurses get exposure to a variety of nursing fields including...

- ER
- OR
- Swing Bed
- Post Anesthesia Recovery
- Pediatrics
- Med/Surg



RURAL NURSES ROCK!

Helping you succeed...

Our progressive Retention Program is run by a seasoned RN whose priority is helping you to feel comfortable and succeed in your job here.

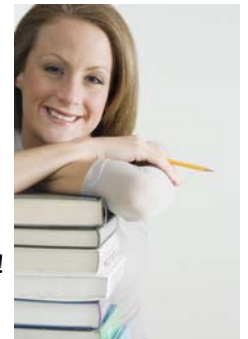
- Personalized, comprehensive orientation
- Performance-based step raises
- Quarterly education needs assessment
- Continuing Education including ACLS, PALS, TNCC, ENPC
- Mentoring by experienced staff
- Skills Labs & Drills
- Flexible Scheduling
- Supplemental Shifts Available

Enjoy a positive work atmosphere with plenty of recognition for a job well done!

Continuing Education

Are you an LPN hoping to become an RN, but don't have the time and money to go back to school? Check out our on-site **LPN to RN Program** through the Rural Outreach Nursing Education Program (RONE).

- Classes and clinicals at Lincoln Hospital through Lower Columbia College. No driving to Spokane!
- Scholarship Program
- Financial Aid
- Loan Repayment with Sign-on Contract
- **EARN WHILE YOU LEARN!!**



Progressive Technology

Because we're caring for our friends, neighbors and family, Lincoln Hospital has the best technology, including...

- 16-Slice CT, Ultrasound, LoRad Mammography with soft paddles, visiting MRI
- Wireless Space Labs Cardiac Telemetry/Monitoring
- Auto Pulse & Braselow Pediatric Code Cart in ER
- Bladder Scanner
- Electronic Medical Records
- Tele-ER & TelePharmacy